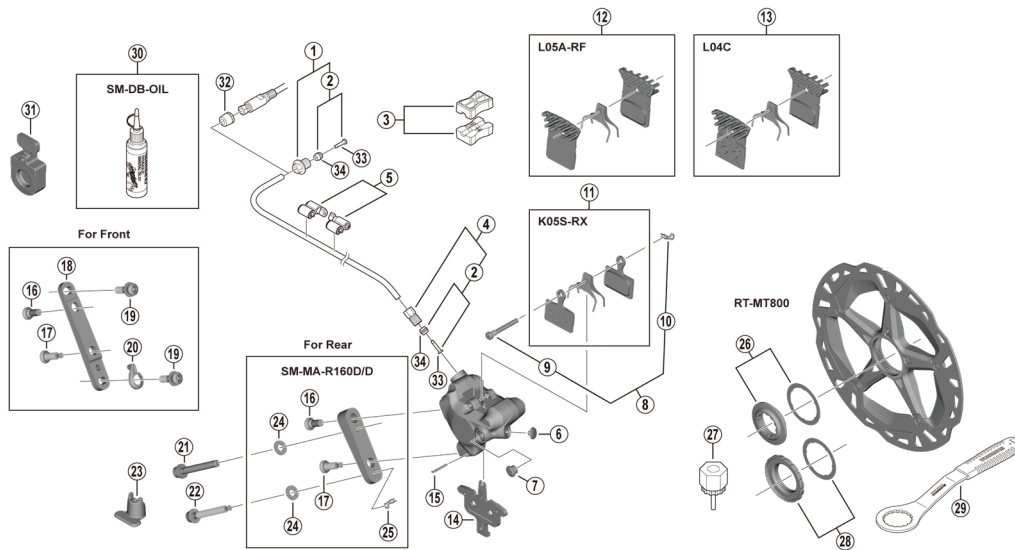


ULTEGRA Disc Brake  
**BR-R8170** Brake Caliper  
**RT-MT800** Disc Rotor

**SM-BH90-JK-SSR** Brake Hose  
**SM-BH90-JK-SS** Brake Hose



BR-R8170  
 BR-R8270

ITEM NO.	SHIMANO CODE NO.	DESCRIPTION	INTERCHANGEABILITY	
1	Y8RD98010	Flange flare nut unit (M9/black) for ST-R8170	A	
	Y8RD98020	Flare nut unit (M8/silver) for ST-R9180	A	
2	Y8JA98020	Olive and connector insert	A	
3	Y8H198030	TL-BH61 Shimano original tool (2 pcs.)	A	
4	Y8JA98010	Flare nut unit (M8/black)	A	
5	Y83098040	SM-HANG Hose supporter A and B	A	
6	Y2J706000	Bleed screw cap		
7	Y2HW10000	Bleed boss cap		
8	Y2GM98020	Pad axle and snap retainer	B	
9	Y8EB12010	Pad axle	B	
10	Y8J716000	Snap retainer	A	
*	EBPK05SRXA	K05S-RX Resin pad and spring (pair)	A	
	Y2GM98030			
*	EBPL05ARFA	L05A-RF Resin pad with fin and spring (pair)	A	
	Y2EM98010			
	EBPL05ARFBS			
* 12	Y2EM98011	L05A-RF Resin pad with fin and spring (25 pairs)	A	
	IBPL04CMFA	L04C Metal pad with fin and spring (pair)	A	
Y8N398040				
14	Y8N218000	Pad spacer	A	
15	Y8N207000	Screw fixing pin	A	
16	Y2HW06010	Caliper fixing screw B2	A	
17	Y8N206000	Caliper fixing screw B	A	
18	Y8N230000	Front caliper mount bracket	A	
19	Y8N204000	Caliper fixing screw A	A	
20	Y8N205000	Snap ring	A	
	Y2J708000	Caliper fixing screw C2 for 10 mm rear mount thickness	A	B
	Y2J708050	Caliper fixing screw C2 for 15 mm rear mount thickness	A	B
	Y2J708010	Caliper fixing screw C2 for 20 mm rear mount thickness	A	B
	Y2J708020	Caliper fixing screw C2 for 25 mm rear mount thickness	A	B
	Y2J708030	Caliper fixing screw C2 for 30 mm rear mount thickness	A	B
	Y2J708040	Caliper fixing screw C2 for 35 mm rear mount thickness	A	B
22	Y8N208000	Caliper fixing screw C for 10 mm rear mount thickness	A	B
	Y8N208050	Caliper fixing screw C for 15 mm rear mount thickness	A	B
	Y8N208010	Caliper fixing screw C for 20 mm rear mount thickness	A	B
	Y8N208020	Caliper fixing screw C for 25 mm rear mount thickness	A	B
	Y8N208030	Caliper fixing screw C for 30 mm rear mount thickness	A	B
	Y8N208040	Caliper fixing screw C for 35 mm rear mount thickness	A	B
23	Y2HW12000	Screw length selector	A	
24	Y8NU02000	Washer for R160 adapter	A	
25	Y8NU03000	Snap retainer	A	
26	Y8K198010	Lock ring and washer	A	
27	Y12009230	TL-LR15 Lock ring removal tool	A	
28	Y2A598030	Lock ring and washer (external spline type)	A	
29	Y13098000	TL-FC36 Lock ring removal tool	A	
30	Y83998020	Mineral oil (100 ml)	A	
	Y83998030	Mineral oil (500 ml)	A	
31	Y2HW15000	Bleeding spacer	A	
32	Y8H802000	Hose cover for easy hose joint system, not used with easy hose joint direct system	A	
33	Y8JA98026	Connecting insert (100 pcs.)	A	
34	Y8H298047	Olive (100 pcs.)	A	

A: Same parts.

B: Parts are usable, but differ in materials, appearance, finish, size, etc.

Absence of mark indicates non-interchangeability.

Specifications are subject to change without notice.

Jul.-2022-4860C

© Shimano Inc. I

**SHIMANO**