

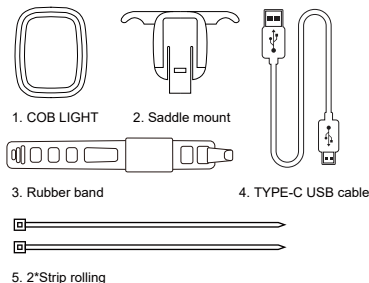
## USB RECHARGEABLE BIKE LIGHT

### MANUAL

Thank you for choosing the BRIVIGA LW-CUBE100 LED Bike Light.

- For using this product safely and conveniently and keeping it well-preserved, please read this manual carefully before using. Please save this manual for future reference.
- Due to the improvement of the product, the product you bought may not be exactly in accordance with the introduction of this manual. We apologize for that.

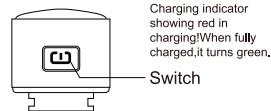
### CONTENTS



### SPECIFICATION

Item No.: LW-CUBE100 with safe mode  
Main materials: Aluminum alloy frame+PC  
Charging port: Type-C  
Max. lumens: 50 lumens (Red)  
Color: Matt black-red lens  
LED type: 24PCS COB LED CHIPS  
Battery capacity: 400mah rechargeable li-poly  
Charge time: 3h  
Size (W/O bracket): 38.5(L)\*29(W)\*30(D)MM  
N.W (W/ bracket): 35g  
Finish: Fine anodizing

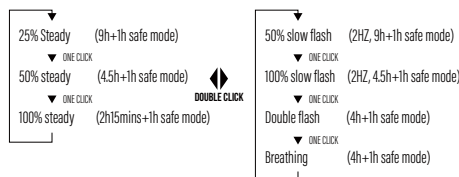
### OPERATION



#### SAFE MODE:

When the battery is low, the light will turn to double flash mode automatically to last another 60 mins before it totally switches off due to being out of power.

Long press = on/off. When it is on, click switch to change modes:



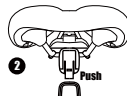
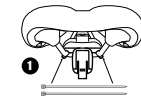
### HOW TO CHARGE BATTERY



- Attention: would like to recommend you to use the original supplied USB cable to charge the battery. Unplug the light cable once the battery is fully charged.

### HOW TO MOUNT THE LIGHT

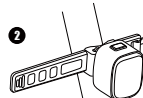
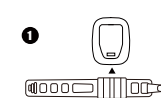
#### EASY INSTALLATION-1



3. Push the light into the bracket, with the lock end fit into the hole of the light's back.



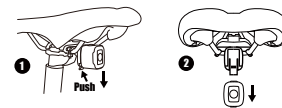
#### EASY INSTALLATION-2



3. Push the light into the bracket, with the lock end fit into the hole of the light's back.



### HOW TO DISMOUNT THE LIGHT



#### CAUTION

- \*Do not charge over 5V the battery will result in damage.
- \*Keep away from flammable objects while charging as this may lead to fire or battery explosion.
- \*Do not smoke while charging as the battery may release hydrogen gas. Always charge your battery in a well-ventilated space.
- \*Never connect or disconnect the plug or cord with wet hands whilst charging. Do not connect or disconnect the plug or cord when they are wet, it may lead to electric shock.
- 1. It is normal that the battery may get high temperatures during charging (up to 104°F/40°C), as the chemical in battery is in reaction. If the battery is not drained completely before charging, it may also get warm.
- 2. Several factors can influence the battery's durability: type of cell strain, the maintenance routine, the temperature and number of charges etc. Normally speaking, the higher the battery capacity, the longer the burn time.
- 3. The battery capacity may become ineffective about 80% of its value after 300-500 charge/discharge cycles. The battery may have 3 years life span under good care.
- 4. The battery voltage and capacity decrease apparently at low temperatures, especially near or below ice point. The capacity decreases 5%-10% at freezing (burn time decreases 50%). At -20°C, the capacity decreases 30% (burn time decreases 70%). The battery performance will return normal when the temperature gets up to 70°F/20°C. The battery will lose around 1% of its capacity per day when you store the battery at normal room temperature. Battery temperature should never exceed 104°F/40°C, it will lose about 5% of its capacity per day.
- 5. If you do not use the battery for a long time, be sure to fully recharge every 3 months. Please store the battery in a cool and dry place.

#### HOW TO CLEAN AND CARE THE LIGHT

- \*Make sure to clean the dust and dirt on the light with soft damp cloth after every ride.
- \*Water resistant is for rain water only. Do not submerge the battery or the whole light into water when cleaning.
- CAUTION:** When riding at night, please follow the guidelines below:
  - \*Carrying a flash light is recommended.
  - \*Use caution when handling, the light may get hot.
  - \*Unplug the light if not in use.
  - \*Unplug connector by the plug, never by the cable.
- \*Provide sufficient airflow to the light for cooling during use.
- \*Do not control any part of the system under water.
- \*Do not look directly at light.
- \*Do not leave the light on and unattended.
- \*Keep the light away from fire and combustible materials.
- \*Do not store head unit when hot or straightway after use.
- \*Unplug the light, charger and cable once the battery is fully charged.
- \*This light is for bicycle use only.
- \*Do not dis-assemble the light.

#### SIMPLE PROBLEMS ANALYSIS AND SOLUTION

- Q: The light cannot be switched on?
- A: Check if the battery still has power. If it still has power, check if the switch button is pressed & held for 2 seconds. If it is out of power, please recharge it.
- Q: Why does the brake function stop working?
- A: Check if the battery is low, when the battery is low, the light can only work in flash mode without brake function. If the battery still has power but the brake function goes out, press & hold the switch for 2 seconds to switch the light off and then restart it.