

Tool carriage Hercules

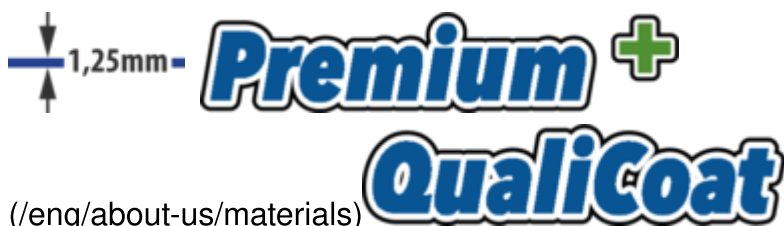
940H1



Usage



Profiles



[_\(/eng/support/warranty\)]((/eng/support/warranty))

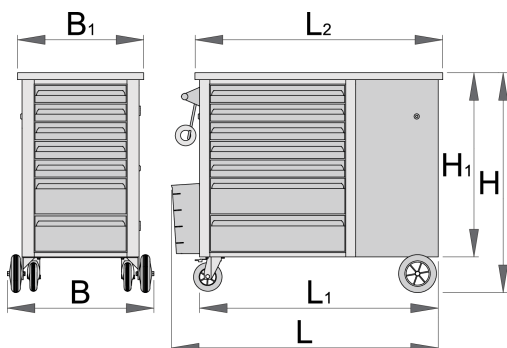
Product features

- material: premium PLUS sheet metal
- central locking system with a lock and folding key
- lock with key included also foam keyring
- oil and acid resistant wheels of a diameter of 125mm, two with brake, which blocks spinning and rotating of the wheel
- full extension drawers with top quality ball-bearing slides
- opening and closing of drawers is very simple due to the uniform solution - drawer handle on the upper side enables users a synchronic grip and opening of a carriage drawer.

- drawers with non-slip interior synthetic lining
- coated with eco colour of Qualicoat quality standard
- 7 front drawers (5x L 563 x W 365 x H 70mm, 2x L 563 x W 383 x H 150mm)
- 7 side drawers (5x L 374 x W 364 x H 70mm, 2x L 374 x W 364 x H 150mm)
- basic dimensions with handle and casters L 1182 x W 640 x H 955 mm
- total volume of drawers: 215 litres
- wooden worktop
- static load capacity of carriages without casters: 2300 kg
- dynamic load capacity of carriages: 550 kg
- capacity of side drawers: 25 kg
- capacity of front drawers: 45 kg
- drawers compatible with SOS tool trays 1/3, 2/3, 3/3

Advantages:

- Perforated wall on the back side of the tool carriage allows hanging tools with tool hooks
- As an accessories available also a spray holder for easy storage of sprays up to dia. 68mm, and a back door with a lock



615510

L

1182

L1

1040

L2

1080

B

640

B1

550

H

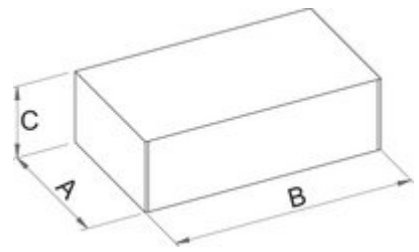
955

H1

800



115600



Retail packaging

	MA	MB	MC	
615510	590	1120	835	115600

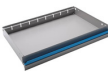
Transport packaging

		TA	TB	TC	
615510	1	590	1120	835	115600

Spare parts



Set of locks with keys



Small drawer



Big drawer



Ball-bearing slide, set of 1 pair



Ball-bearing slide, set of 1 pair



Set of casters



Synthetic covering for drawer D3



Syntetic covering for the drawer D4



Syntetic covering for the drawers



Syntetic covering for the drawers



Handle for articles 940H